

City Council 101

Week Two: City Departments





Burlington is a great place to live, work, and play.

Values

Partnership - We encourage teamwork between individuals and organizations to inspire innovation and effective service, creating a great place to live, work, and play.

Respect - We respond to the diverse views of the community and incorporate these into discussions and decision-making with consistent follow-through and accountability.

Integrity - We are transparent, honest, and ethical in our interactions and conduct our business in accordance with the highest standards of professional behavior.

Dedication - We are passionate, progressive individuals striving for a cohesive community, enthusiastic about achieving excellence.

Efficiency - We pursue continuous learning, adaptability and fiscal responsibility to create a sustainable, safe community.

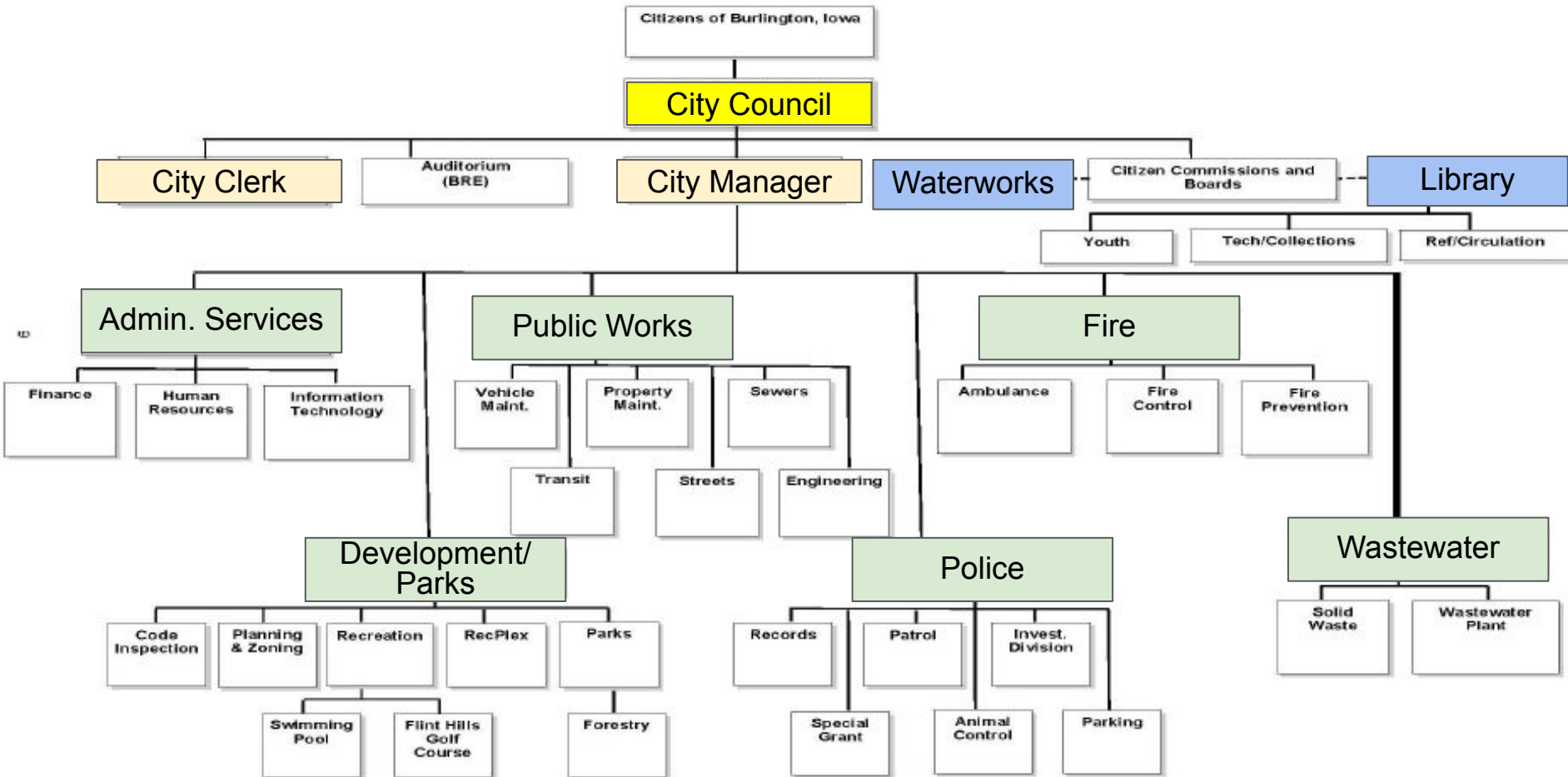
Unions

AFSCME Local 828 - American Federation of State, County and Municipal Employees (June 30, 2026)

CWA Local 7176 - Communications Workers of America (June 30, 2026)

IAFF Local 301 - International Association of Firefighters (June 30, 2026)

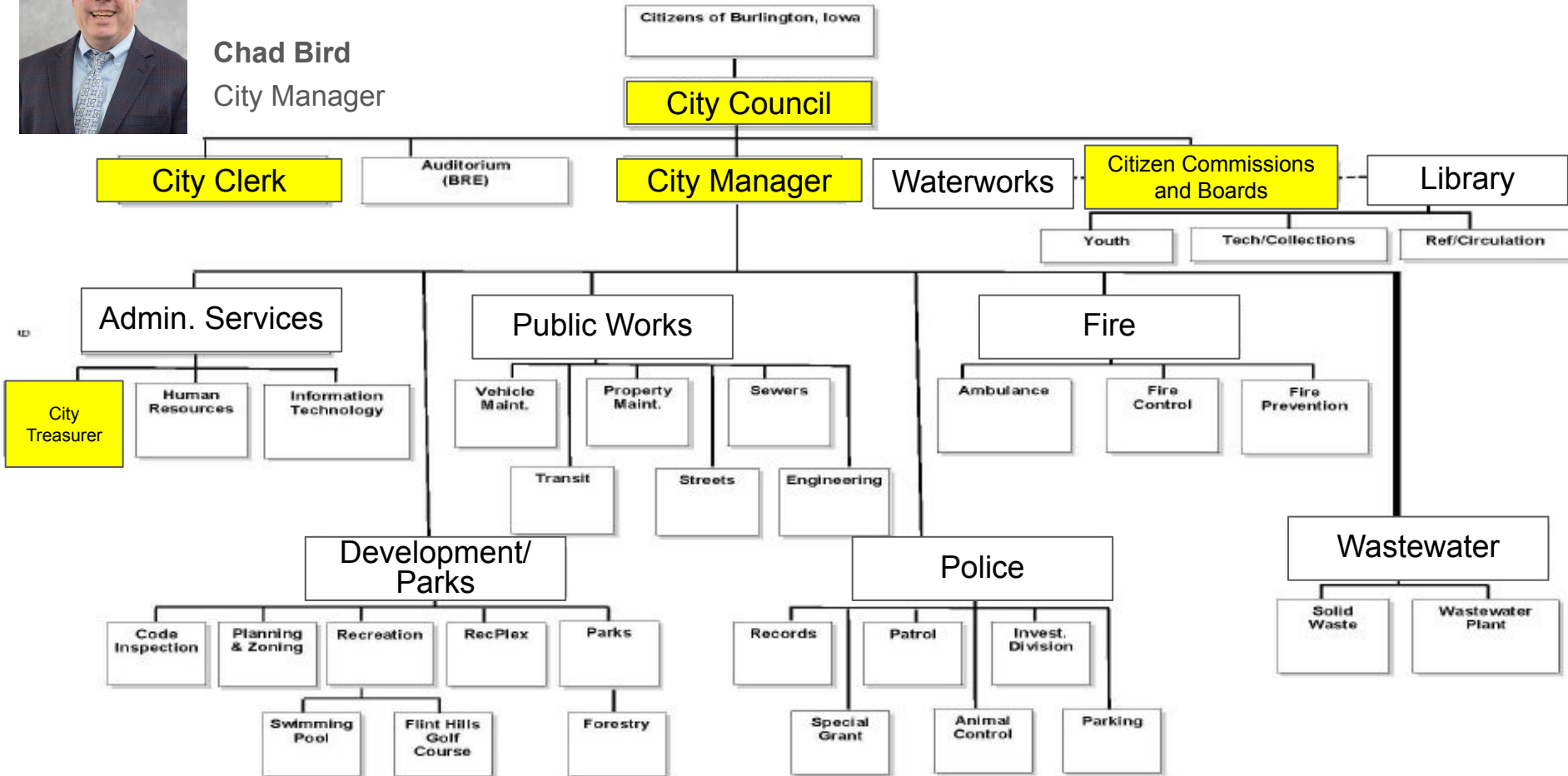
CITY OF BURLINGTON ORGANIZATIONAL CHART





Chad Bird
City Manager

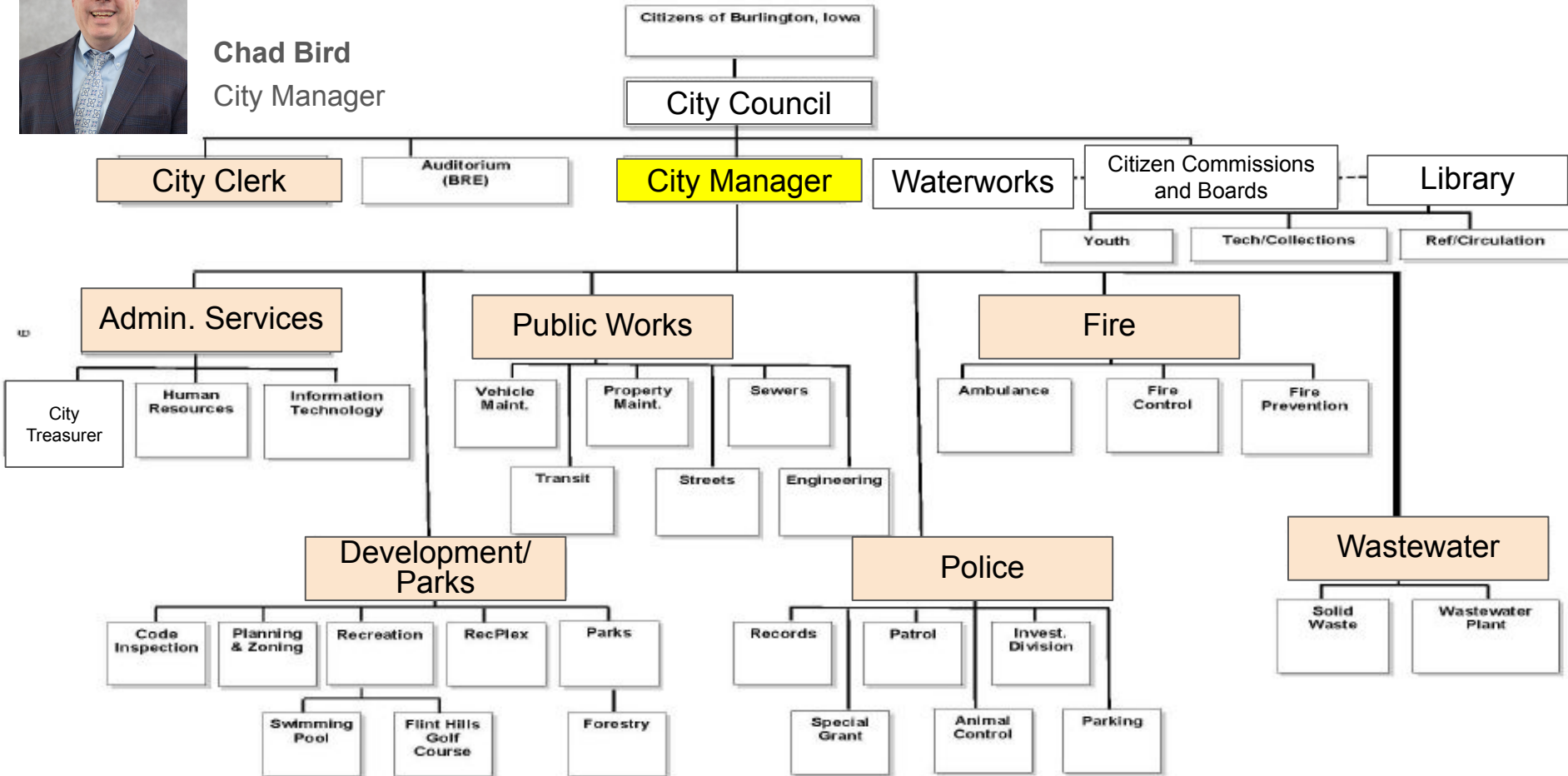
CITY OF BURLINGTON ORGANIZATIONAL CHART



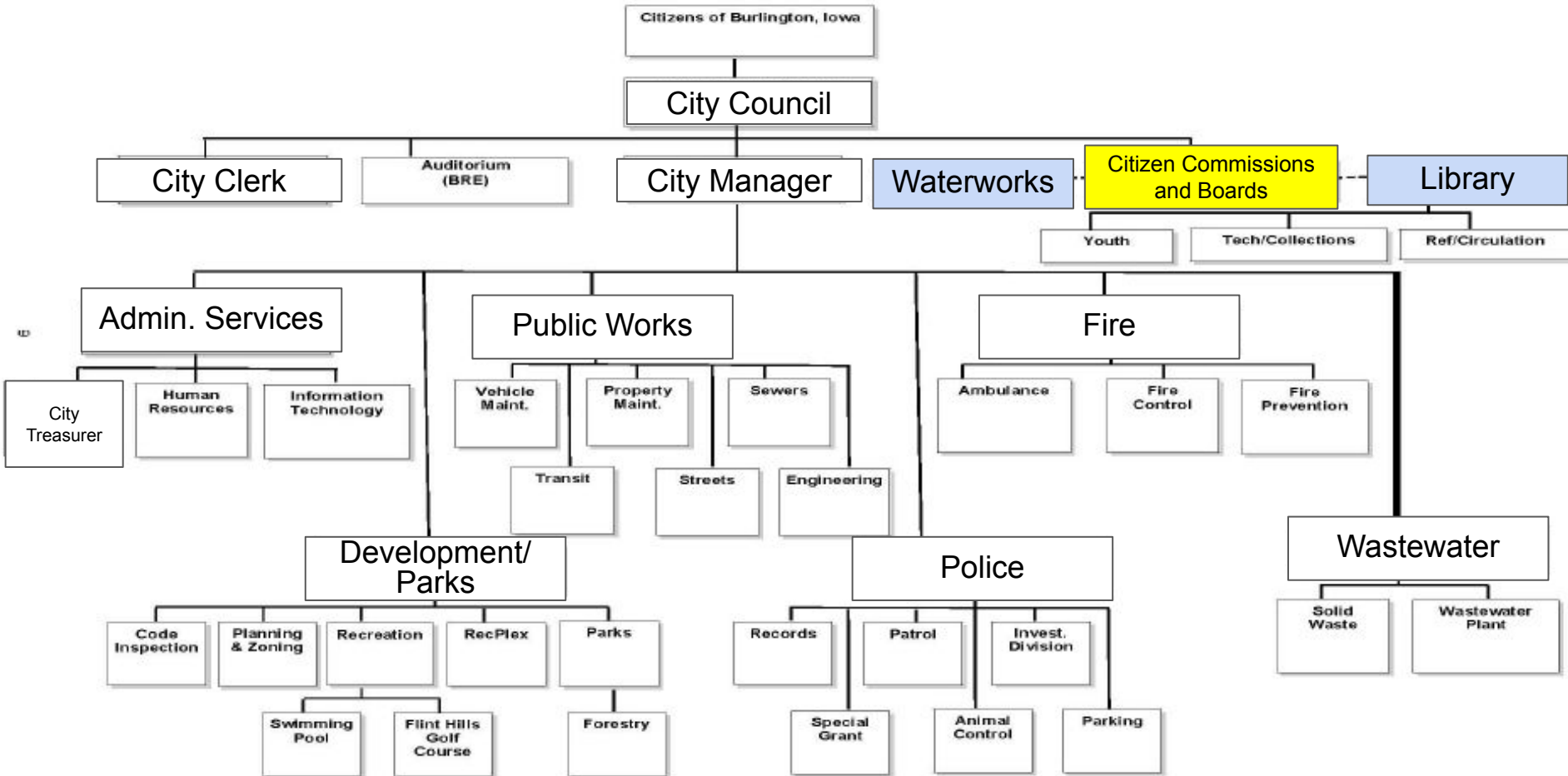


Chad Bird
City Manager

CITY OF BURLINGTON ORGANIZATIONAL CHART



CITY OF BURLINGTON ORGANIZATIONAL CHART



Department Heads



Nick MacGregor
Deputy City Manager
Public Works Director



Adam Schaefer
Police Chief



Stephanie Stuecker
Director of Admin.
Services



Katie Music
City Clerk



Nathan Toops
Fire Chief



Tim Myatt
Wastewater Plant
Manager



Eric Tysland
Development &
Parks Director



Shane Johnson
Waterworks
Director



Brittany Jacobs
Library Director



Public Works

Major Operating Divisions

- PW Administration
- Engineering
- Transit
- Street Maintenance
- Snow Removal
- Sanitary Sewer Maintenance
- Storm Sewer
- Solid Waste
- Property Maintenance
- Vehicle Maintenance

Other Non-Operating

(Property Maintenance Oversight)

- PW Building
- Port of Burlington/Riverfront
- Traffic Signals/Public Lighting
- Auditorium
- Depot
- Senior Center
- Parking Maintenance
- City Hall Maintenance

Organizational Chart

Staffing:

FY26: 35.2 FTE

FY12: 40.6 FTE



Staffing

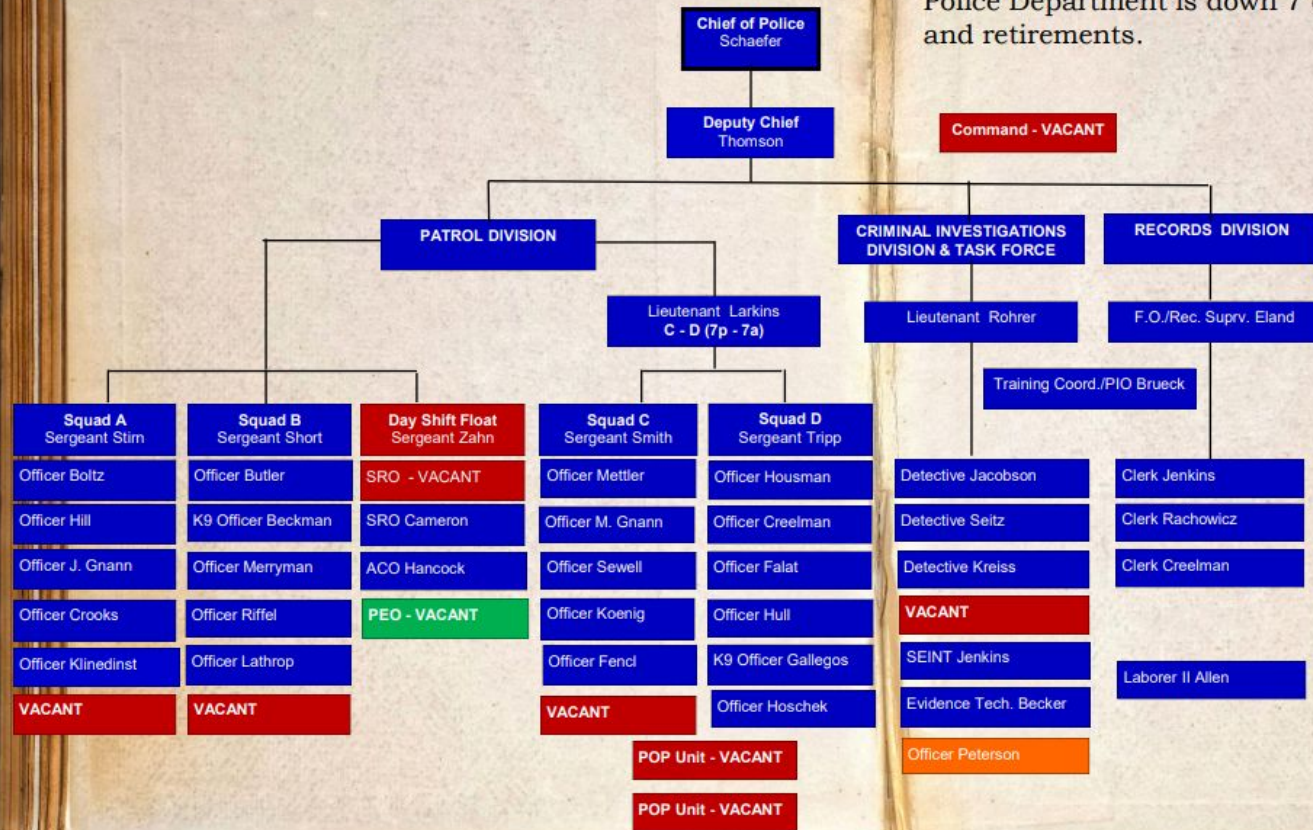
Development: 8FT

Parks: 8 FT, 3 PT

Seasonal: 17.06 FTE

Our Team

As of January 1, 2024, and still today, the Burlington Police Department is down 7 officers due to resignations and retirements.



	Sworn Officer - Vacant Position
	Civilian - Vacant Position
	Status Does Not Count Towards Shift Strength

BURLINGTON POLICE DEPT ORGANIZATIONAL CHART

Chief - 1
 Deputy Chief - 1
 Command - 1
 Lieutenant - 2
 Sergeant - 5
 Patrol Officer - 24
 Problem Oriented Policing Officer - 2
 School Resource Officer - 2
 Detective/Investigator - 5
 Training Coord./Public Info. Officer - 1
 Fiscal Officer/Records Supervisor - 1
 Civilian Records Clerks - 3
 Civilian Evidence Technician - 1
 Laborer II - 1
 Animal Control Officer (P/T) - .5
 Parking Enforcement Officer (P/T) - .5



Fire Department Operations

Emergency Medical Services (IDPH Governing Authority & NEMSIS Reporting)

- 911 ALS Ambulance Transport
- Inter-Facility Ambulance Transport

Fire Protection (est. 1841 by city charter/governance-NFPA & ISO STANDARDS)

- Provide Suppression/Protection to the City
- Provide Suppression/Protection to Quad Townships
- Auto-Aid to West Burlington for Structure Fires

Special Operations

- HazMat Response to Des Moines County
- Confined space rescue, high/low angle rescue, water rescue

Fire Prevention AKA Community Risk Reduction

- The 5 E's – Next slide.....
- Inspections
- Investigations
- Plans Review
- Public Education
- Community Engagement

They called, figure it out!

Who is ... Burlington Municipal Waterworks



- Plant Designed and Constructed in 1967
- Staffed 24/7/365
- Employees – 27 Total – Plant, Maintenance, Office
- Governed by board of 3 appointed by City Council
- Entirely funded from revenue collected from
 - residential and commercial water accounts
- Provides water to almost all Des Moines County
 - (W. Burlington, Danville, Middletown, Rathbun Rural Water and Iowa Army Ammunition Plant)

WWTF Facility



STAFFED 24/7

TOTAL STAFF: 18 ½

BUDGET FOR FY 23/24: \$5.8 M

BUDGET FOR FY 24/25: \$6.8 M



Dedicated to the Advancement of Learning, 1898

The Burlington Public Library creates opportunities for all people to **connect** with others, to **learn** about the world around them, and to **imagine** the futures before them.



Department Heads



Nick MacGregor
Deputy City Manager
Public Works Director



Adam Schaefer
Police Chief



Stephanie Stuecker
Director of Admin.
Services



Katie Music
City Clerk



Nathan Toops
Fire Chief



Tim Myatt
Wastewater Plant
Manager



Eric Tysland
Development &
Parks Director



Shane Johnson
Waterworks
Director



Brittany Jacobs
Library Director